



# **CENTRAL WORKSHOP**

**MECHANICAL RIDES**

# ***GEOSTRINA PANDA*** ***– NOOR MALL***

**MANUFATURER:**

**SBF - ITALY**

**YEAR MANUFACTURED:**

**DIMENSION:**

**PASSENGER CAPACITY:**

**24 PASSENGERS**

**SERIAL NUMBER/ASSET NUMBER:**

**AH 17031**

**POWER REQUIREMENT:**

**380V 60Hz 3P+N**



# **TRAMPOLINE- NOOR MALL**

**MANUFATURER:**

**GULFTECH**

**YEAR MANUFACTURED:**

**DIMENSION:**

**PASSENGER CAPACITY:**

**SERIAL NUMBER/ASSET NUMBER:**

**AH 989898**

**POWER REQUIREMENT:**



# **MONO RAIL – NOOR MALL**

**MANUFACTURER:**

**SBF - ITALY**

**YEAR MANUFACTURED:**

**February 2008**

**DIMENSION:**

**PASSENGER CAPACITY:**

**SERIAL NUMBER/ASSET NUMBER:**

**397020**

**POWER REQUIREMENT:**

**8KW 380V 60Hz 3P+N**



# **ROLLER COASTER – NOOR MALL**

**MANUFACTURER:**

**L&T SYSTEM - ITALY**

**YEAR MANUFACTURED:**

**DIMENSION:**

**PASSENGER CAPACITY:**

**18 Passengers**

**SERIAL NUMBER/ASSET NUMBER:**

**1047NC**

**POWER REQUIREMENT:**



# **MINI TRAIN – NOOR MALL**

**MANUFATURER:**

**GR RONDINA - ITALY**

**YEAR MANUFACTURED:**

**2004**

**DIMENSION:**

**PASSENGER CAPACITY:**

**14 Passengers**

**SERIAL NUMBER/ASSET NUMBER:**

**1105.0**

**POWER REQUIREMENT:**



# **MID BUMPER CAR – NOOR MALL**

**MANUFATURER:**

**IE PARK - ITALY**

**YEAR MANUFACTURED:**

**DIMENSION:**

**PASSENGER CAPACITY:**

**SERIAL NUMBER/ASSET NUMBER:**

**AH 17037**

**POWER REQUIREMENT:**



# **MINI TAGADA – NOOR MALL**

**MANUFATURER:**

**EMILIANA LUNA PARK - ITALY**

**YEAR MANUFACTURED:**

**June 2008**

**DIMENSION:**

**PASSENGER CAPACITY:**

**SERIAL NUMBER/ASSET NUMBER:**

**MTD30608SA**

**POWER REQUIREMENT:**

**27KW 380V 60Hz 3P+N**



# **SUSPENDED COASTER**

## **– HAYAT MALL**

**MANUFACTURER:**

**VISA INTERNATIONAL ITALY**

**YEAR MANUFACTURED:**

**N/A**

**DIMENSION:**

**53M X 40M 250M TRACK LENGTH**

**PASSENGER CAPACITY:**

**16 PASSENGERS**

**SERIAL NUMBER/ASSET NUMBER:**

**AH6814**

**POWER REQUIREMENT:**

**60 KW 380V 60Hz 3P+N**



# ***JUMPING TOWER – HAYAT MALL***

**MANUFATURER:**

**ZAMPERLA ITALY**

**YEAR MANUFACTURED:**

**FEBRUARY 2003**

**DIMENSION:**

**5ML X 5MW X 12MH**

**PASSENGER CAPACITY:**

**16 PASSENGERS**

**SERIAL NUMBER/ASSET NUMBER:**

**GJM16F01147IE**

**POWER REQUIREMENT:**

**21.3 KW 380V 60Hz 3P+N**



# **TAGA J – HAYAT MALL**

**MANUFATURER:**

**GOSETTO ITALY**

**YEAR MANUFACTURED:**

**2015**

**DIMENSION:**

**7.7 METER DIAMETER**

**PASSENGER CAPACITY:**

**12 KIDS**

**SERIAL NUMBER:**

**1506568**

**POWER REQUIREMENT:**

**9 KW 380V 60Hz 3P+N**



# **MINI TWISTER – HAYAT MALL**

**MANUFATURER:**

**GULFTECH KSA**

**YEAR MANUFACTURED:**

**2011**

**DIMENSION:**

**9 METER DIAMETER**

**PASSENGER CAPACITY:**

**6 GONDOLAS 2PASSENGER/GONDOLA**

**SERIAL NUMBER/ASSET NUMBER:**

**AH7305**

**POWER REQUIREMENT:**

**73.5 KW 380V 60Hz 3P+N**



# **MINI SKATER – HAYAT MALL**

**MANUFATURER:**

**ZAMPERLA ASIA PACIFIC**

**YEAR MANUFACTURED:**

**JANUARY 2008**

**DIMENSION:**

**7ML X 7MW**

**PASSENGER CAPACITY:**

**16 PASSENGERS**

**SERIAL NUMBER/ASSET NUMBER:**

**630GWSC12F00508SA**

**POWER REQUIREMENT:**

**6 KW 380V 60Hz 3P+N**



## **MEDIUM BUMPER CAR – HAYAT MALL**

**MANUFACTURER:**

**IE PARK ITALY**

**YEAR MANUFACTURED:**

**N/A**

**DIMENSION:**

**14ML X 10MW**

**PASSENGER CAPACITY:**

**11 CARS 2 KIDS EACH CAR**

**SERIAL NUMBER/ASSET NUMBER:**

**AH5256**

**POWER REQUIREMENT:**

**10 KW 380V 60Hz 3P+N**



# ***DARK HOUSE – HAYAT MALL***

**MANUFACTURER:**

**UNKNOWN**

**YEAR MANUFACTURED:**

**N/A**

**DIMENSION:**

**15ML X 8M**

**PASSENGER CAPACITY:**

**6 CARS 2 PAX EACH CAR**

**SERIAL NUMBER/ASSET NUMBER:**

**AH13019**

**POWER REQUIREMENT:**

**6 KW 380V 60Hz 3P+N**



## ***MEDIUM BUMPER CARS – JUBAIL MALL***

**MANUFACTURER:**

**YEAR MANUFACTURED:**

**DIMENSION:**

**12M X 8.5M**

**PASSENGER CAPACITY:**

**6 CARS**

**POWER REQUIREMENT:**

**3P + N 380/400V. 10KVA.**



# ***MINI PIRATE SHIP – JUBAIL MALL***

**MANUFACTURER:**

**YEAR MANUFACTURED:**

**DIMENSION:**

**7M X 4.5 M**

**PASSENGER CAPACITY:**

**12 PERSON**

**ASSET NO:**

**POWER REQUIREMENT:**

**380V. 3P+N 50/60 HZ**



# YOYO/ORBIT – TALA MALL

**MANUFATURER:**

**GULFTECH KSA**

**YEAR MANUFACTURED:**

**2013**

**DIMENSION:**

**8M DIAMETER**

**PASSENGER CAPACITY:**

**16 PASSENGERS**

**POWER REQUIREMENT:**

**8 KW 380V 60Hz 3P+N**



○ ○ HUAWEI NOV8 2 Plus  
DUAL CAMERA

# **MIDI SCOOTER – TALA MALL**

**MANUFACTURER:**

**C&S RIDES ITALY**

**YEAR MANUFACTURED:**

**2015**

**DIMENSION:**

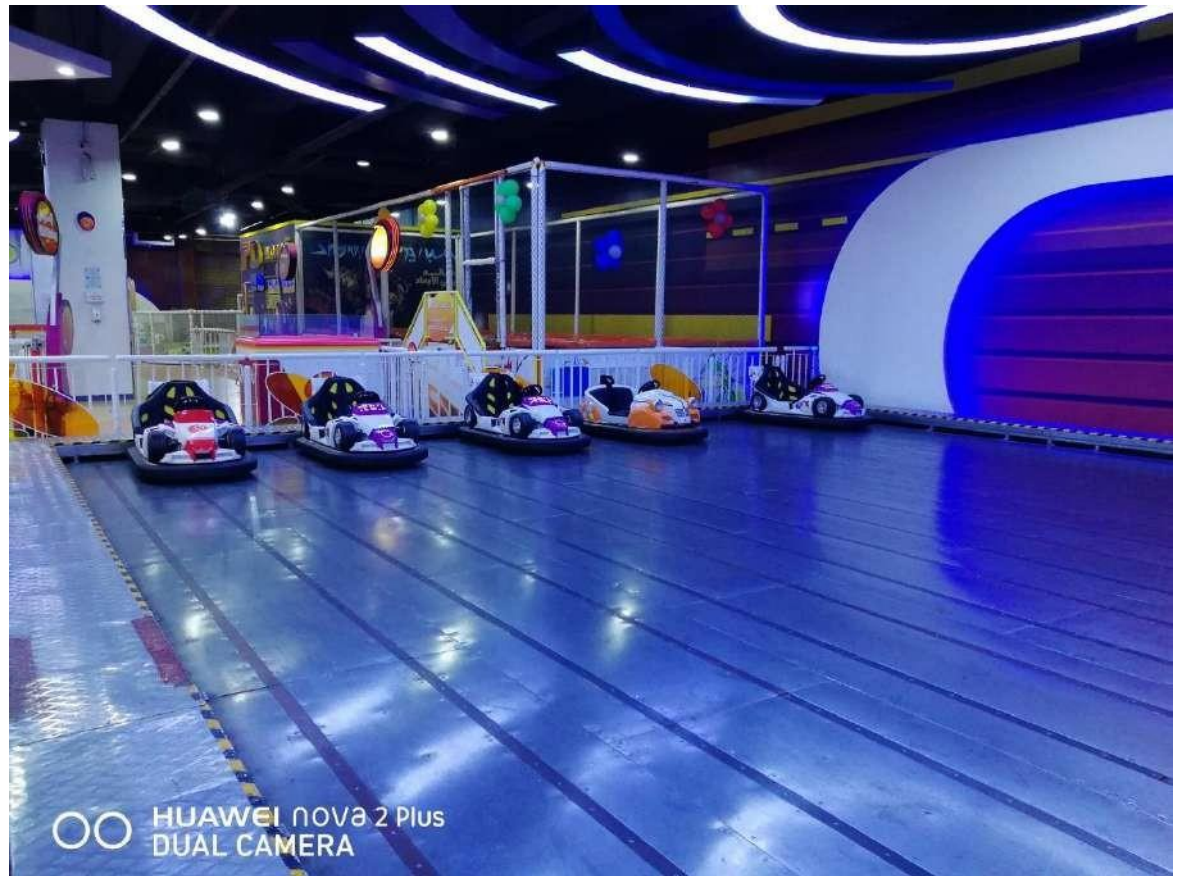
**9M X 13M**

**PASSENGER CAPACITY:**

**5 CARS/2 PASSENGERS EACH**

**POWER REQUIREMENT:**

**10 KW 380V 60Hz 3P+N**



# **MINI BOWLING – TALA MALL**

**MANUFATURER:**

**QUBICA/AMF USA**

**YEAR MANUFACTURED:**

**N/A**

**DIMENSION:**

**6M X 20M**

**PLAYER CAPACITY:**

**4 LANES**

**POWER REQUIREMENT:**

**12 KW 230V 60Hz 3P+N**



## TRAMPOLINE – TALA MALL

**MANUFATURER:**

GULFTECH KSA

**YEAR MANUFACTURED:**

N/A

**DIMENSION:**

10ML X 4MW X 4MH

**PASSENGER CAPACITY:**

12 KIDS

**POWER REQUIREMENT:**

.5 KW 230V 60Hz



# **MINI SOFTPLAY – TALA MALL**

**MANUFATURER:**

**UNKNOWN**

**YEAR MANUFACTURED:**

**N/A**

**DIMENSION:**

**6M X 5M**

**PASSENGER CAPACITY:**

**POWER REQUIREMENT:**

**.3 KW 230V 60Hz 2P+GROUND**



# **TAGA J – NAKHEEL MALL**

**MANUFACTURER:**

**GOSETTO ITALY**

**YEAR MANUFACTURED:**

**07/2014**

**DIMENSION:**

**8.5M X 7.7M**

**PASSENGER CAPACITY:**

**10 KIDS**

**SERIAL NUMBER:**

**1407532**

**POWER REQUIREMENT:**

**9 KW 380V 60Hz 3P+N**



# ***NORTH POLE – NAKHEEL MALL***

**MANUFACTURER:**

**ZAMPERLA ASIA PACIFIC**

**YEAR MANUFACTURED:**

**11/2014**

**DIMENSION:**

**20M X 12M**

**PASSENGER CAPACITY:**

**12 KIDS**

**SERIAL NUMBER:**

**630CSA08F14019SA**

**POWER REQUIREMENT:**

**12 KW 380V 60Hz 3P+N**



**SAMBA TURTAL NEW  
GULFTECH  
ASSET NO.**

**MANUFACTURER:**

**XXXXXXXXXX**

**YEAR MANUFACTURED:**

**XXXXXXXXXX**

**DIMENSION:**

**XXXXXXXXXX**

**PASSENGER CAPACITY:**

**XXXXXXXXXX**

**SERIAL NUMBER:**

**XXXXXXXXXX**

**POWER REQUIREMENT:**

**XXXXXXXXXX**



***DROP TOWER ROTO UP  
GULFTECH NEW  
ASSET NO.***

**MANUFACTURER:**

***XXXXXXXXXX***

**YEAR MANUFACTURED:**

***XXXXXXXXXX***

**DIMENSION:**

***XXXXXXXXXX***

**PASSENGER CAPACITY:**

***XXXXXXXXXX***

**SERIAL NUMBER:**

***XXXXXXXXXX***

**POWER REQUIREMENT:**

***XXXXXXXXXX***



**FLOM RIDE**  
**MAKHA 28-03-2012**  
**ASSET NO. 12470**

**MANUFACTURER:**

**XXXXXXXXXX**

**YEAR MANUFACTURED:**

**XXXXXXXXXX**

**DIMENSION:**

**XXXXXXXXXX**

**PASSENGER CAPACITY:**

**XXXXXXXXXX**

**SERIAL NUMBER:**

**XXXXXXXXXX**

**POWER REQUIREMENT:**

**XXXXXXXXXX**



**MONO RAIL**  
**ABHA 11-06-2012**  
**ASSET NO. 12554**

**MANUFACTURER:**

**SBF**

**YEAR MANUFACTURED:**

**2004 OCTOBER**

**DIMENSION:**

**XXXXXXXX**

**PASSENGER CAPACITY:**

**XXXXXXXXXX**

**ASSET NO.:**

**12554**

**POWER REQUIREMENT:**

**XXXXXXXX**



**JUMPING STAR**  
**HAIL 16-07-2012**  
**ASSET NO. 14354**

**MANUFACTURER:**

**ZAMPERLA**

**YEAR MANUFACTURED:**

**XXXXXXXXXXXXXX**

**DIMENSION:**

**6 MTR**

**PASSENGER CAPACITY:**

**XXXXXXXXXX**

**SERIAL NO.:**

**XXXXXXXXXX**

**POWER REQUIREMENT:**

**XXXXXXXXXX**



***JUMPING STAR  
BALJURSHI 02-09-2012  
ASSET NO. 19028***

**MANUFACTURER:**

**XXXXXXXXXX**

**YEAR MANUFACTURED:**

**XXXXXXXXXX**

**DIMENSION:**

**7 MTR**

**PASSENGER CAPACITY:**

**XXXXXXXXXX**

**SERIAL NO.:**

**XXXXXXXXXX**

**POWER REQUIREMENT:**

**XXXXXXXXXX**



**DROP TOWER SALTOMOTTO  
AL-KHUBAR 16-10-2012  
ASSET NO. 22208**

**MANUFACTURER:**

**S B F**

**YEAR MANUFACTURED:**

**2002**

**DIMENSION:**

**8 MTR**

**PASSENGER CAPACITY:**

**12 PASSENGER**

**SERIAL NUMBER:**

**972015**

**POWER REQUIREMENT:**

**XXXXXXXXXXXX**



***EARTH QUICK  
AL-HASSA 07-03-2013  
ASSET NO. 18314***

**MANUFACTURER:**

***XXXXXXXX***

**YEAR MANUFACTURED:**

***XXXXXXX***

**DIMENSION:**

***XXXXXX***

**PASSENGER CAPACITY:**

***XXXXXXX***

**SERIAL NUMBER:**

***XXXXXX***

**POWER REQUIREMENT:**

***XXXXXXXXXX***



***DROP TOWER***  
***RED SEA MALL JEDDHA***  
***20-03-2013***  
***ASSET NO. 15263***

**MANUFACTURER:**

**S B F**

**YEAR MANUFACTURED:**

**DIMENSION:**

**12 MTR**

**PASSENGER CAPACITY:**

**12 PASSENGER**

**SERIAL NUMBER:**

**XXXXXXX**

**POWER REQUIREMENT:**

**XXXXXXX**



***DROP TOWER  
PANORAMA 21-03-2013  
ASSET NO. 13371***

**MANUFACTURER:**

***S B F***

**YEAR MANUFACTURED:**

**DIMENSION:**

***12 MTR***

**PASSENGER CAPACITY:**

***XXXXXXXX***

**SERIAL NUMBER:**

***XXXXXXXX***

**POWER REQUIREMENT:**

***XXXXXXXX***



**JUMPING STAR**  
**H.M.F.TAIF 30-06-2013**  
**ASSET NO. 15040**

**MANUFACTURER:**

**XXXXXXX**

**YEAR MANUFACTURED:**

**XXXXXXXXX**

**DIMENSION:**

**6 MTR**

**PASSENGER CAPACITY:**

**6 SEATS**

**POWER REQUIREMENT:**

**XXXXXXX**



***DROP TOWER***  
***FUN TOWN QASSIM 23-11-2013***  
***ASSET NO. 14367***

**MANUFACTURER:**

***XXXXXXX***

**YEAR MANUFACTURED:**

***XXXXXXXXX***

**DIMENSION:**

***12 MTR***

**PASSENGER CAPACITY:**

***12 SEATS***

**POWER REQUIREMENT:**

***XXXXXXX***



**JUMPING STAR**  
**HAIL 07-01-2014**  
**ASSET NO. 22205**

**MANUFACTURER:**

**XXXXXXX**

**YEAR MANUFACTURED:**

**XXXXXXXXX**

**DIMENSION:**

**6 MTR**

**PASSENGER CAPACITY:**

**6 SEATS**

**POWER REQUIREMENT:**

**XXXXXXX**



***DROP TOWER SALTOMOTO  
AL-HASSA 17-04-2014  
ASSET NO. 19467***

**MANUFACTURER:**

**S B F**

**YEAR MANUFACTURED:**

**2002**

**DIMENSION:**

**8 MTR**

**PASSENGER CAPACITY:**

**15 PASSENGER**

**POWER REQUIREMENT:**

**XXXXXXX**



***JUMPING STAR***  
***AZIZ MALL JEDDHA 21-04-2014***  
***ASSET NO. 14959***

**MANUFACTURER:**

**XXXX**

**YEAR MANUFACTURED:**

**XXXXXX**

**DIMENSION:**

**6 MTR**

**PASSENGER CAPACITY:**

**6 PASSENGER**

**POWER REQUIREMENT:**

**XXXXXXX**



***JUMPING STAR***  
***AL-JAMA TAIF 28-04-2014***  
***ASSET NO. 17972***

**MANUFACTURER:**

***XXXX***

**YEAR MANUFACTURED:**

***XXXXXX***

**DIMENSION:**

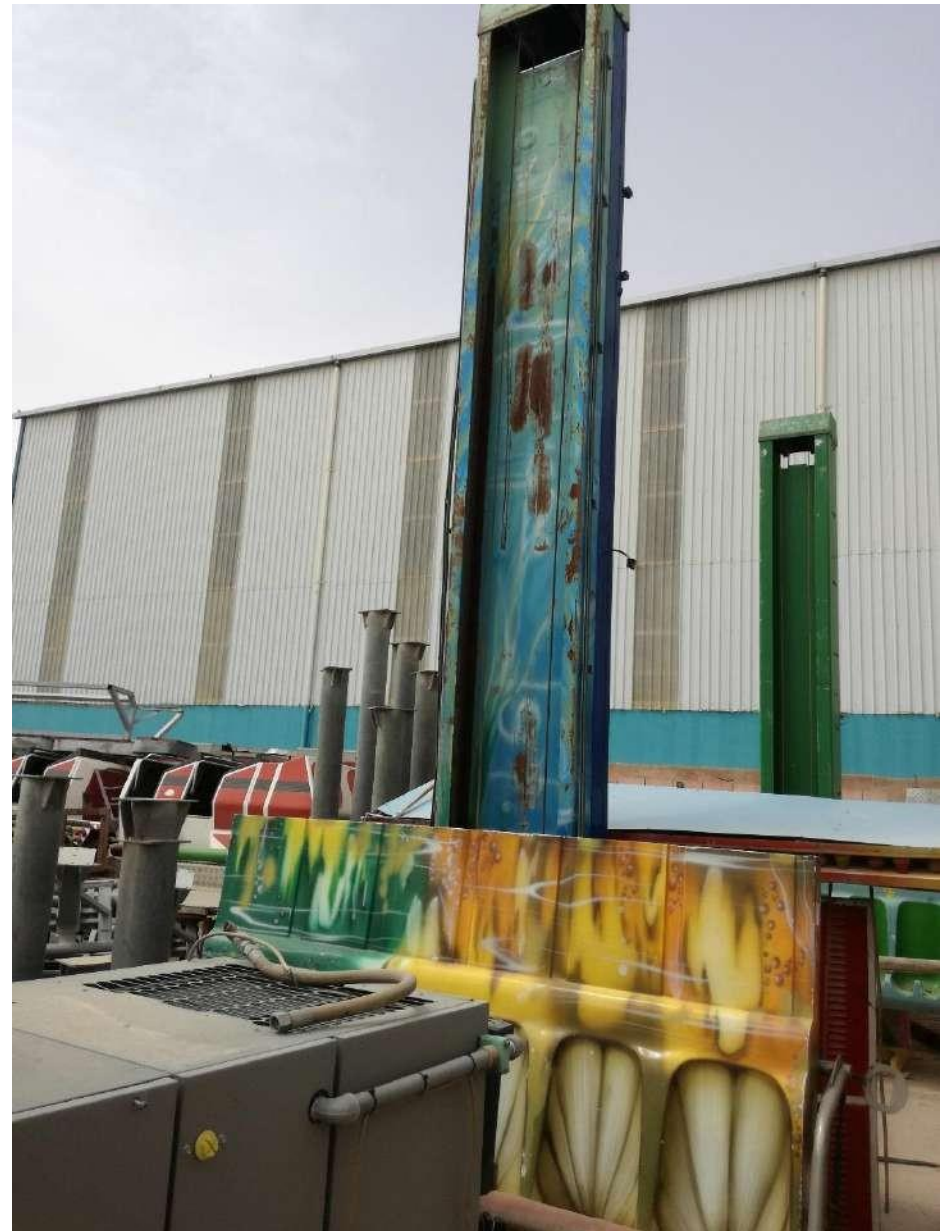
***6 MTR***

**PASSENGER CAPACITY:**

***6 PASSENGER***

**POWER REQUIREMENT:**

***XXXXXXX***



***DROP TOWER ROTO UP  
SPARKY' DHARAN DAMMAM  
11-12-2014  
ASSET NO. 18323***

**MANUFACTURER:**

***XXXX***

**YEAR MANUFACTURED:**

***XXXXXX***

**DIMENSION:**

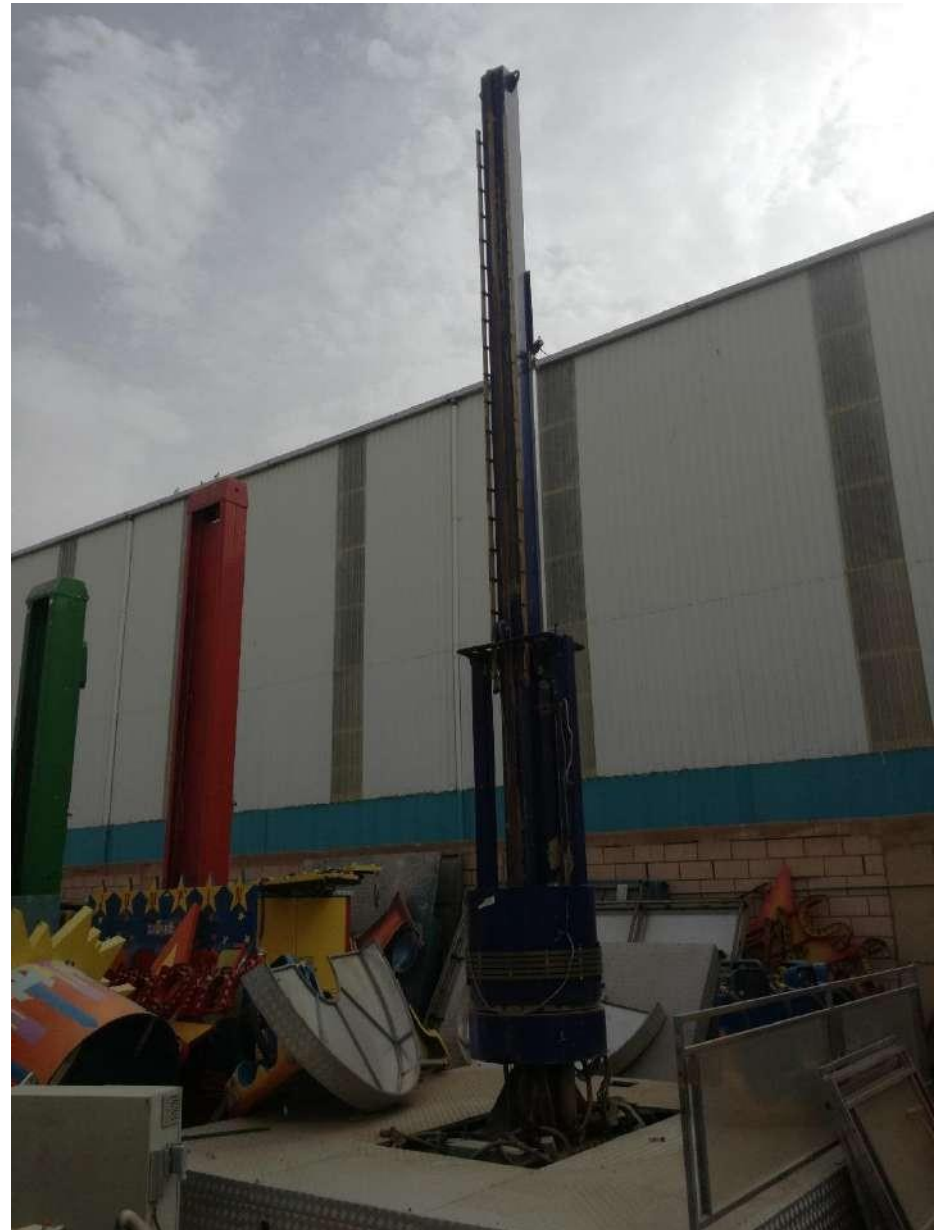
***XXXXX***

**PASSENGER CAPACITY:**

***XXXXXX***

**POWER REQUIREMENT:**

***XXXXXXX***



**RAPID RIVER**  
**JEDDHA 06-01-2015**  
**ASSET NO. 15268**

**MANUFACTURER:**

**XXXX**

**YEAR MANUFACTURED:**

**XXXXXX**

**DIMENSION:**

**XXXXX**

**PASSENGER CAPACITY:**

**XXXXXX**

**POWER REQUIREMENT:**

**XXXXXXX**



**ROLLAR COASTER**  
**AL-KHUBAR BANDA = YUNBO**  
**16-03-2015**  
**ASSET NO. 14964**

**MANUFACTURER:**

**XXXX**

**YEAR MANUFACTURED:**

**XXXXXX**

**DIMENSION:**

**XXXXX**

**PASSENGER CAPACITY:**

**XXXXXX**

**POWER REQUIREMENT:**

**XXXXXXX**



**SCOOTER BIG MOBILE**  
**AL-DOF – AMEER MANSOOR**  
**27-05-2015**  
**ASSET NO. 12434**

**MANUFACTURER:**

**XXXX**

**YEAR MANUFACTURED:**

**XXXXXX**

**DIMENSION:**

**XXXXX**

**PASSENGER CAPACITY:**

**XXXXXX**

**POWER REQUIREMENT:**

**XXXXXXX**



**UFO ENTERPRISES  
RODHA - YAMAMA  
03-06-2015  
ASSET NO. 29163**

**MANUFACTURER:**

**XXXX**

**YEAR MANUFACTURED:**

**XXXXXX**

**DIMENSION:**

**XXXXX**

**PASSENGER CAPACITY:**

**XXXXXX**

**POWER REQUIREMENT:**

**XXXXXXX**



HARTIG ELEKTROTECHNIK GMBH	
D-44699 Soest 11, P.O. Box 11 41 00, Fax: 05291 41 00 11, 30 April 2007	
<b>HARTIG</b>	
ANNEBMENT RIDE "UFO"	
Hersteller: HUSS MASCHINENFABRIK GMBH & CO. KG Strassensstraße 56 2000 Bremen 1	
INDEX	Valid for order No. 41 018
Wiring diagram: HU	
Page 1: Index	
Page 2: Sheet description and switching function	
Page 3: Instructions box 1 - power	
Page 4: Remote control	
Page 5: Control	
Page 6: Remote	
Page 7: Demarcation diagram	
Page 8: Instructions box 2 - power	
Page 9: Instructions box 2 - power	
Page 10: Control Light	
POWER SUPPLY:	
Motor:	25 kW 150 A 380V/3 phase 50 Hz
Light:	35 kW 50 A 380/220V 50 Hz

**CRAZY HOUSE**

**H.M.F.TAIF**

**15-07-2015**

**ASSET NO.**

**MANUFACTURER:**

**XXXX**

**YEAR MANUFACTURED:**

**XXXXXX**

**DIMENSION:**

**XXXXX**

**PASSENGER CAPACITY:**

**XXXXXX**

**POWER REQUIREMENT:**

**XXXXXXX**



**ROLLER COASTER**  
**FUN TOWN QASSIM**  
**26-07-2015**  
**ASSET NO. 14362**

**MANUFACTURER:**

**XXXX**

**YEAR MANUFACTURED:**

**XXXXXX**

**DIMENSION:**

**XXXXX**

**PASSENGER CAPACITY:**

**XXXXXX**

**POWER REQUIREMENT:**

**XXXXXXX**



**RODIO BIG SAFARI  
SPARKY'S RABWA  
20-09-2015  
ASSET NO. 11290**

**MANUFACTURER:**

**XXXX**

**YEAR MANUFACTURED:**

**XXXXXX**

**DIMENSION:**

**XXXXX**

**PASSENGER CAPACITY:**

**XXXXXX**

**POWER REQUIREMENT:**

**XXXXXXX**



**FLAYING WHALE**  
**JEDDHA / DAWADMI**  
**17-11-2015**  
**ASSET NO. 15521**

**MANUFACTURER:**

**SBF**

**YEAR MANUFACTURED:**

**2007 JULY**

**DIMENSION:**

**XXXXX**

**PASSENGER CAPACITY:**

**XXXXXX**

**POWER REQUIREMENT:**

**380 V 60 H**



**WALL CLIMBING**  
**ARAB MALL JEDDHA**  
**12-12-2015**  
**ASSET NO. 13551**

**MANUFACTURER:**

**XXXXX**

**YEAR MANUFACTURED:**

**XXXXXX**

**DIMENSION:**

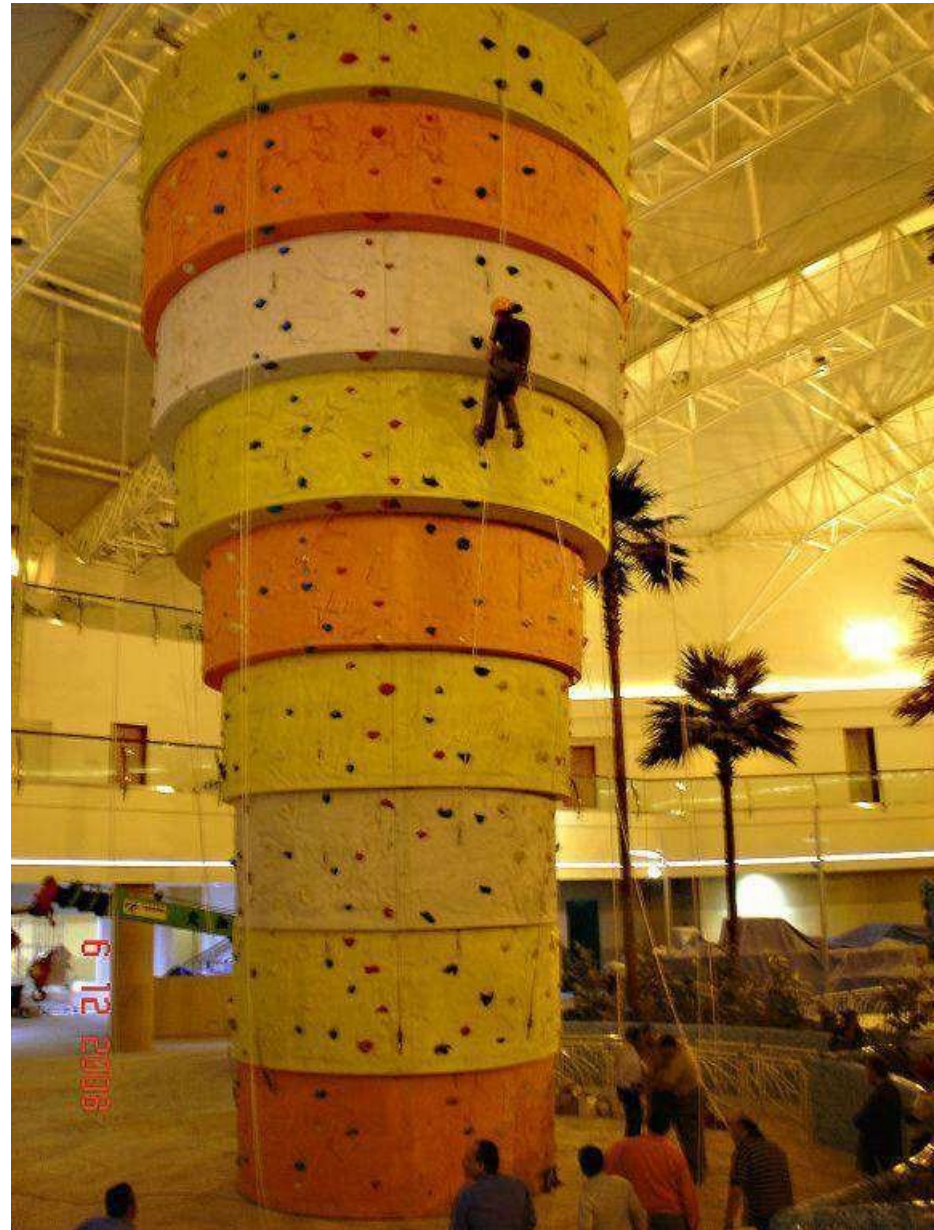
**XXXXX**

**PASSENGER CAPACITY:**

**XXXXXX**

**POWER REQUIREMENT:**

**XXXXXXX**



**DISCO**  
**HOKAIR LAND**  
**01-02-2016**  
**ASSET NO. 31199**

**MANUFACTURER:**

**XXXXX**

**YEAR MANUFACTURED:**

**XXXXXX**

**DIMENSION:**

**XXXXX**

**PASSENGER CAPACITY:**

**XXXXXX**

**POWER REQUIREMENT:**

**XXXXXXX**



**FLAYING TIGER**  
**SPARKY'S AL-HASSA**  
**24-02-2016**  
**ASSET NO. 18308**

**MANUFACTURER:**

**XXXXX**

**YEAR MANUFACTURED:**

**XXXXXX**

**DIMENSION:**

**XXXXX**

**PASSENGER CAPACITY:**

**XXXXXX**

**POWER REQUIREMENT:**

**XXXXXXX**



**TORNADO ROLLAR COASTER  
RODHA / FUN TOWN QASSIM**

**08-03-2016**

**ASSET NO. 29176**

**MANUFACTURER:**

**XXXXX**

**YEAR MANUFACTURED:**

**XXXXXX**

**DIMENSION:**

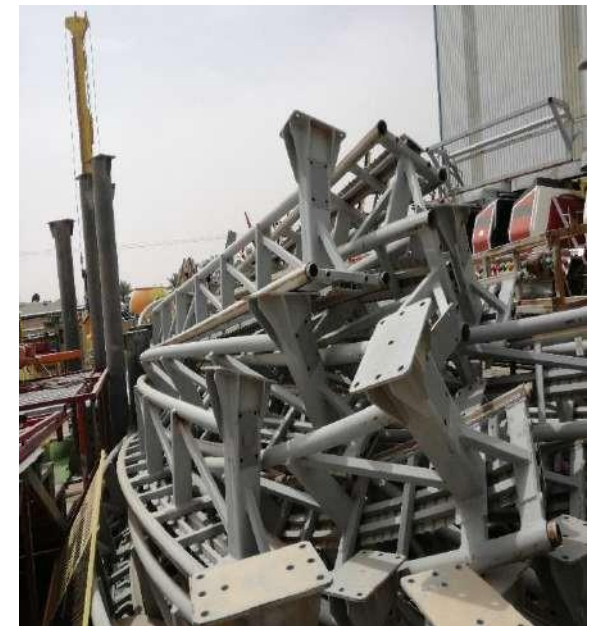
**XXXXX**

**PASSENGER CAPACITY:**

**XXXXXX**

**POWER REQUIREMENT:**

**XXXXXXX**



**TRAIN ECO EXPRESS**  
**NEW STORE- 30-06-2016**  
**ASSET NO. 29659**

**MANUFACTURER:**

**OTECH srl**

**YEAR MANUFACTURED:**

**06-2015**

**DIMENSION:**

**XXXXX**

**PASSENGER CAPACITY:**

**24**

**POWER REQUIREMENT:**

**XXXXXXXX**



**JUMPING STAR  
LUNA PARK MADINA  
06-09-2016  
ASSET NO. 16850**

**MANUFACTURER:**

**ZAMPARLA**

**YEAR MANUFACTURED:**

**XXXXXX**

**DIMENSION:**

**XXXXX**

**PASSENGER CAPACITY:**

**XXXXX**

**POWER REQUIREMENT:**

**XXXXXXX**



***DROP TOWER***  
***RASHID MALL MADINA***  
***08-09-2016***  
***ASSET NO. 16943***

**MANUFACTURER:**

***SBF***

**YEAR MANUFACTURED:**

***XXXXXX***

**DIMENSION:**

***XXXXX***

**PASSENGER CAPACITY:**

***XXXXX***

**POWER REQUIREMENT:**

***XXXXXXX***



**DUDA COASTER**  
**LUNA PARK TAIF 09-01-2017**  
**ASSET NO. 16256**

**MANUFACTURER:**

**XXXXXXX**

**YEAR MANUFACTURED:**

**XXXXXX**

**DIMENSION:**

**XXXXX**

**PASSENGER CAPACITY:**

**XXXXX**

**POWER REQUIREMENT:**

**XXXXXXXX**



**TAYARA BIG**  
**LUNA PARK TAIF 10-01-2017**  
**ASSET NO. 16228**

**MANUFACTURER:**

**XXXXXXX**

**YEAR MANUFACTURED:**

**XXXXXX**

**DIMENSION:**

**XXXXX**

**PASSENGER CAPACITY:**

**XXXXX**

**POWER REQUIREMENT:**

**XXXXXXX**



**MONKEY JUMP GULFTECH**  
**SPARKY'S AL-HASSA**  
**14-02-2017**  
**ASSET NO. 12498**

**MANUFACTURER:**

**XXXXXXX**

**YEAR MANUFACTURED:**

**XXXXXX**

**DIMENSION:**

**XXXXX**

**PASSENGER CAPACITY:**

**XXXXX**

**POWER REQUIREMENT:**

**XXXXXXX**



**SPACE FLIGHT  
FANATEER AL-JUBAIL  
14-06-2017  
ASSET NO. 12519**

**MANUFACTURER:**

**XXXXXXX**

**YEAR MANUFACTURED:**

**XXXXXX**

**DIMENSION:**

**XXXXX**

**PASSENGER CAPACITY:**

**XXXXX**

**POWER REQUIREMENT:**

**XXXXXXXX**



**LOLLY TREE SWING**  
**SPARKY'S DHARAN MALL**  
**07-12-2017**  
**ASSET NO. 29549**

**MANUFACTURER:**

**XXXXXXX**

**YEAR MANUFACTURED:**

**XXXXXX**

**DIMENSION:**

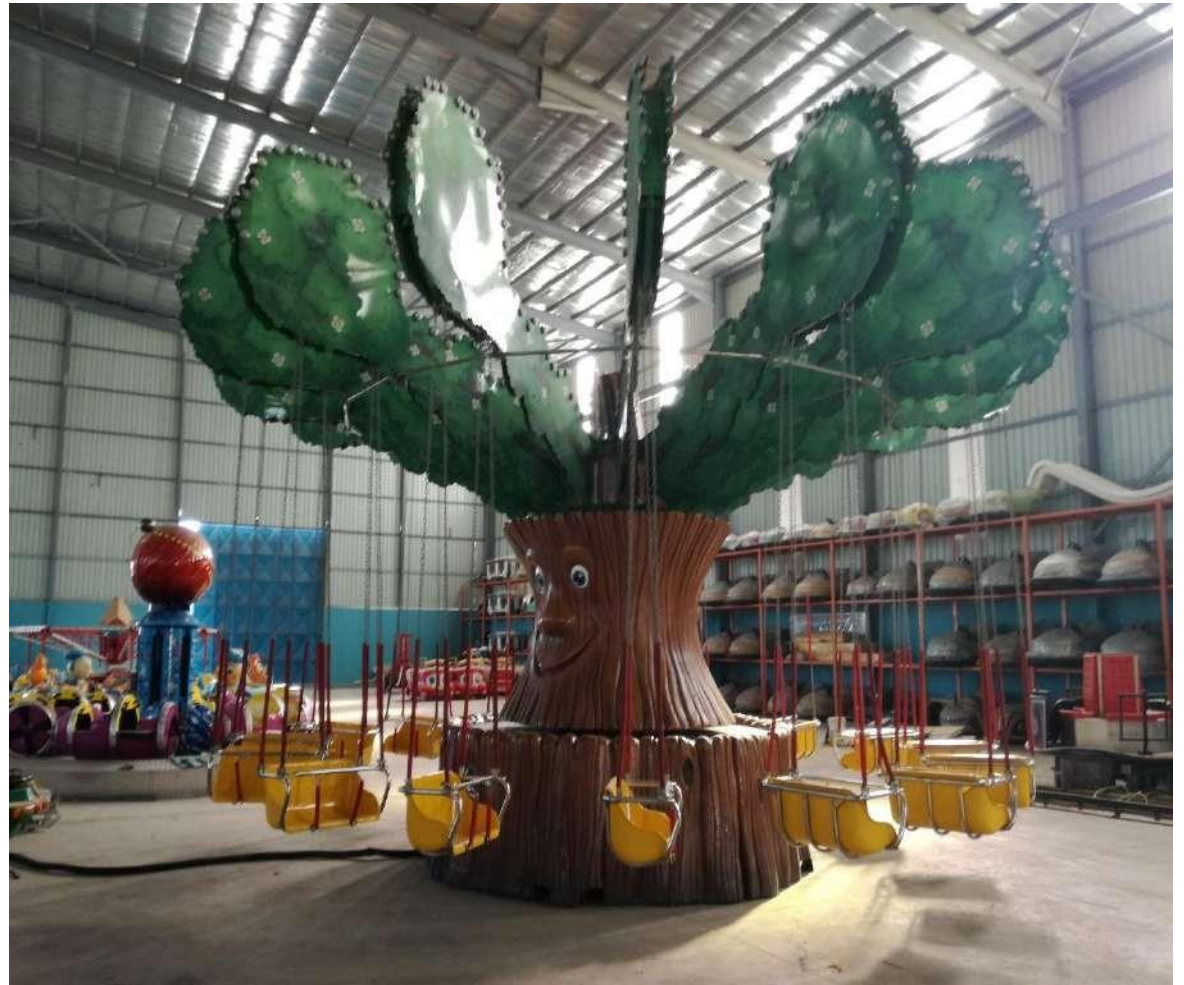
**XXXXX**

**PASSENGER CAPACITY:**

**XXXXX**

**POWER REQUIREMENT:**

**XXXXXXXX**



**TAYARA HELICOPTER  
NAKHEEL MALL QASSIM  
16-12-2017  
ASSET NO. 14342**

**MANUFACTURER:**

**XXXXXXX**

**YEAR MANUFACTURED:**

**XXXXXX**

**DIMENSION:**

**XXXXX**

**PASSENGER CAPACITY:**

**XXXXX**

**POWER REQUIREMENT:**

**XXXXXXXX**



**BALARINA**  
**NAKHEEL MALL QASSIM**  
**21-12-2017**  
**ASSET NO. 18303**

**MANUFACTURER:**

**XXXXXXX**

**YEAR MANUFACTURED:**

**XXXXXX**

**DIMENSION:**

**XXXXX**

**PASSENGER CAPACITY:**

**XXXXX**

**POWER REQUIREMENT:**

**XXXXXXX**



***SALASIL MINI  
SHIRA MALL DAMMAM  
07-01-2018  
ASSET NO. 18063***

**MANUFACTURER:**

***XXXXXXX***

**YEAR MANUFACTURED:**

***XXXXXX***

**DIMENSION:**

***XXXXX***

**PASSENGER CAPACITY:**

***XXXXX***

**POWER REQUIREMENT:**

***XXXXXXX***



**SCOOTER BIG W. ANTENNA**  
**SHIRA MALL DAMMAM**  
**08-01-2018**  
**ASSET NO.**

**MANUFACTURER:**

**XXXXXXX**

**YEAR MANUFACTURED:**

**XXXXXX**

**DIMENSION:**

**XXXXX**

**PASSENGER CAPACITY:**

**XXXXX**

**POWER REQUIREMENT:**

**XXXXXXXX**



**SAMBA BALOON**  
**NAKHEEL MALL QASSIM**  
**10-01-2018**  
**ASSET NO.**

**MANUFACTURER:**

**XXXXXXX**

**YEAR MANUFACTURED:**

**XXXXXX**

**DIMENSION:**

**XXXXX**

**PASSENGER CAPACITY:**

**XXXXX**

**POWER REQUIREMENT:**

**XXXXXXX**



# ROCKING SUBMARINE NAKHEEL MALL QASSIM

20-01-2018

ASSET NO. 14364

MANUFACTURER:

XXXXXXX

YEAR MANUFACTURED:

XXXXXX

DIMENSION:

XXXXX

PASSENGER CAPACITY:

XXXXX

POWER REQUIREMENT:

XXXXXXXX



**EXTRA ORDINARY BICYCLE  
NAKHEEL MALL QASSIM**

**20-01-2018**

**ASSET NO. 15524**

**MANUFACTURER:**

**XXXXXXX**

**YEAR MANUFACTURED:**

**XXXXXX**

**DIMENSION:**

**XXXXX**

**PASSENGER CAPACITY:**

**XXXXX**

**POWER REQUIREMENT:**

**XXXXXXXX**



**MOSER'S RIDES srl**  
Strada Statale 12 Abetone Bronnerio Nord, 198 - 46035 OSTIGLIA (MN) ITALY  
Ph. +39 0385 800001 - Fax +39 0385 800098  
E-MAIL: moser@moserrides.com - WEB SITE: www.moserrides.com

RIDE NAME	EXTRAORDINARY BIKE TWO ELECTRIC		
SERIAL NO.	ZAGEST008/ASHS4220	YEAR OF MANUF.	2008
RIDE MAXIMUM SPEED:	14 mph		mph
ROTATION DIRECTION:	CLOCKWISE <input checked="" type="checkbox"/>	ANTICLOCKWISE <input checked="" type="checkbox"/>	
NUMBER OF PASSENGERS:	2		
MAX WEIGHT FOR SEAT:	100 kg	220 Lbs	
TOTAL LOAD:	200 kg	440 Lbs	
MINIMUM HEIGHT:	120 cm	47 inch	ACCOMPANIED
MINIMUM HEIGHT:	120 cm	47 inch	UNACCOMPANIED
MAX HEIGHT THERE ARE NO MAXIMUM HEIGHT LIMITS PROVIDED THE PASSENGERS ARE PROPERLY SEATED AND SECURED IN THE SEAT SAFELY AND THE SEAT IS LATCHED AND FASTENED CORRECTLY			
M. POWER AVERAGE:	200 W	P: 100 W	RW: 100 W
M. POWER INSTALLED:	220 W	P: 110 W	RW: 110 W
MAXIMUM OPERATING SPEEDS:	FRONT: 14 mph	REAR: 14 mph	
MAXIMUM OPERATING SPEEDS:	FRONT: 20 mph	REAR: 20 mph	

**JUMP AROUND  
RIMALL  
31-01-2018  
ASSET NO. 13260**

**MANUFACTURER:**

**XXXXXXX**

**YEAR MANUFACTURED:**

**XXXXXX**

**DIMENSION:**

**XXXXX**

**PASSENGER CAPACITY:**

**XXXXX**

**POWER REQUIREMENT:**

**XXXXXXXX**



**SAMBA ALAUDDIN**  
**HAPPY LAND DAMMAM**  
**21-02-2018**  
**ASSET NO.**

**MANUFACTURER:**

**XXXXXXX**

**YEAR MANUFACTURED:**

**XXXXXX**

**DIMENSION:**

**XXXXX**

**PASSENGER CAPACITY:**

**XXXXX**

**POWER REQUIREMENT:**

**XXXXXXXX**



**DISCO RIDE**

**HAPPY LAND DAMMAM**

**05-03-2018**

**ASSET NO.**

**MANUFACTURER:**

**XXXXXXX**

**YEAR MANUFACTURED:**

**XXXXXX**

**DIMENSION:**

**XXXXX**

**PASSENGER CAPACITY:**

**XXXXX**

**POWER REQUIREMENT:**

**XXXXXXX**



**DISCOVERY RIDE**  
**HAPPY LAND DAMMAM**  
**07-03-2018**  
**ASSET NO.**

**MANUFACTURER:**

**XXXXXXX**

**YEAR MANUFACTURED:**

**XXXXXX**

**DIMENSION:**

**XXXXX**

**PASSENGER CAPACITY:**

**XXXXX**

**POWER REQUIREMENT:**

**XXXXXXXX**



**TRAIN BIG DIESEL**  
**HAPPY LAND DAMMAM**  
**13-03-2018**  
**ASSET NO.**

**MANUFACTURER:**

**XXXXXXX**

**YEAR MANUFACTURED:**

**XXXXXX**

**DIMENSION:**

**XXXXX**

**PASSENGER CAPACITY:**

**XXXXX**

**POWER REQUIREMENT:**

**XXXXXXXX**



**CHAINEL ) <sup>شركة</sup> HAPPY  
LAND DAMMAM 14-03-  
2018**

**ASSET NO.**

**MANUFACTURER:**

**XXXXXXX**

**YEAR MANUFACTURED:**

**XXXXXX**

**DIMENSION:**

**XXXXX**

**PASSENGER CAPACITY:**

**XXXXX**

**POWER REQUIREMENT:**

**XXXXXXXX**



**MINI OTTO COASTER  
GARDENIA MALL NESTO  
31-03-2018  
ASSET NO. 12587**

**MANUFACTURER:**

**XXXXXXX**

**YEAR MANUFACTURED:**

**XXXXXX**

**DIMENSION:**

**XXXXX**

**PASSENGER CAPACITY:**

**XXXXX**

**POWER REQUIREMENT:**

**XXXXXXXX**



**LOONIE TOOTER TRAIN  
DAREEN MALL DAMMAM**

**27-05-2018**

**ASSET NO. 13560**

**MANUFACTURER:**

**XXXXXXX**

**YEAR MANUFACTURED:**

**XXXXXX**

**DIMENSION:**

**XXXXX**

**PASSENGER CAPACITY:**

**XXXXX**

**POWER REQUIREMENT:**

**XXXXXXXX**



**JUMPING STAR**  
**DAREEN MALL DAMMAM**  
**29-05-2018**  
**ASSET NO. 20924**

**MANUFACTURER:**

**XXXXXXX**

**YEAR MANUFACTURED:**

**XXXXXX**

**DIMENSION:**

**XXXXX**

**PASSENGER CAPACITY:**

**XXXXX**

**POWER REQUIREMENT:**

**XXXXXXXX**



**MINI PIRATE SHIP ( SAFINA )**

**SULTAN MALL JEDDHA**

**11-07-2018**

**ASSET NO. 14685**

**MANUFACTURER:**

**XXXXXXX**

**YEAR MANUFACTURED:**

**XXXXXX**

**DIMENSION:**

**XXXXX**

**PASSENGER CAPACITY:**

**XXXXX**

**POWER REQUIREMENT:**

**XXXXXXX**



**JUMPING STAR**  
**SULTAN MALL JEDDHA**  
**12-07-2018**  
**ASSET NO. 13651**

**MANUFACTURER:**

**ZAMPERLA**

**YEAR MANUFACTURED:**

**XXXXXX**

**DIMENSION:**

**XXXXX**

**PASSENGER CAPACITY:**

**XXXXX**

**POWER REQUIREMENT:**

**XXXXXXX**



**JUMP AROUND  
SULTAN MALL JEDDHA  
12-07-2018  
ASSET NO. 14682**

**MANUFACTURER:**

**ZAMPERLA**

**YEAR MANUFACTURED:**

**XXXXXX**

**DIMENSION:**

**XXXXX**

**PASSENGER CAPACITY:**

**XXXXX**

**POWER REQUIREMENT:**

**XXXXXXX**



**TAYARA RED BARON  
SULTAN MALL JEDDHA**

**12-07-2018**

**ASSET NO. 14684**

**MANUFACTURER:**

**I.E.PARK**

**YEAR MANUFACTURED:**

**XXXXXX**

**DIMENSION:**

**XXXXX**

**PASSENGER CAPACITY:**

**XXXXX**

**POWER REQUIREMENT:**

**XXXXXXXX**



***DROP TOWER NO.1 NEW  
HEAD STORE/LULU/MASAR***

***28-07-2018***

***ASSET NO. 15385***

**MANUFACTURER:**

**GULFTECH**

**YEAR MANUFACTURED:**

**XXXXXX**

**DIMENSION:**

**XXXXX**

**PASSENGER CAPACITY:**

**XXXXX**

**POWER REQUIREMENT:**

**XXXXXXX**



***DROP TOWER NO.2  
ANDULAS JEDDHA/MASAR  
29-07-2018  
ASSET NO. 22229***

**MANUFACTURER:**

**GULFTECH**

**YEAR MANUFACTURED:**

**XXXXXX**

**DIMENSION:**

**XXXXX**

**PASSENGER CAPACITY:**

**XXXXX**

**POWER REQUIREMENT:**

**XXXXXXX**



**BREAKAWAY**  
**H.M.F. TAIF**  
**19-09-2018**  
**ASSET NO. 29172**

**MANUFACTURER:**

**HUSS**

**YEAR MANUFACTURED:**

**XXXXXX**

**DIMENSION:**

**XXXXX**

**PASSENGER CAPACITY:**

**XXXXX**

**POWER REQUIREMENT:**

**XXXXXXX**



**CYCLONE COASTER**

**H.M.F. TAIF**

**20-09-2018**

**ASSET NO. 14093**

**MANUFACTURER:**

**XXXXXX**

**YEAR MANUFACTURED:**

**XXXXXX**

**DIMENSION:**

**XXXXX**

**PASSENGER CAPACITY:**

**XXXXX**

**POWER REQUIREMENT:**

**XXXXXXX**



**ALI BABA**

**H.M.F. TAIF**

**22-09-2018**

**ASSET NO. 15036**

**MANUFACTURER:**

**XXXXXX**

**YEAR MANUFACTURED:**

**XXXXXX**

**DIMENSION:**

**XXXXX**

**PASSENGER CAPACITY:**

**XXXXX**

**POWER REQUIREMENT:**

**XXXXXXX**



**GIANT WHEEL**

**H.M.F. TAIF**

**23-09-2018**

**ASSET NO. 16553**

**MANUFACTURER:**

**XXXXXX**

**YEAR MANUFACTURED:**

**XXXXXX**

**DIMENSION:**

**XXXXX**

**PASSENGER CAPACITY:**

**XXXXX**

**POWER REQUIREMENT:**

**XXXXXXX**



**TRAIN KIDDIE (RESIN )  
SP- ANDULAS JEDDHA  
26-01-2019  
ASSET NO. 15393**

**MANUFACTURER:**

**XXXXXX**

**YEAR MANUFACTURED:**

**XXXXXX**

**DIMENSION:**

**XXXXX**

**PASSENGER CAPACITY:**

**XXXXX**

**POWER REQUIREMENT:**

**XXXXXXXX**



**WAVE BLASTER**  
**SP- ANDULAS JEDDHA**  
**30-01-2019**  
**ASSET NO. 15400**

**MANUFACTURER:**

**XXXXXX**

**YEAR MANUFACTURED:**

**XXXXXX**

**DIMENSION:**

**XXXXX**

**PASSENGER CAPACITY:**

**XXXXX**

**POWER REQUIREMENT:**

**XXXXXXX**



**PIRATE SHIP**

**SP- ANDULAS JEDDHA**

**07-02-2019**

**ASSET NO. 15400**

**MANUFACTURER:**

**XXXXXX**

**YEAR MANUFACTURED:**

**XXXXXX**

**DIMENSION:**

**XXXXX**

**PASSENGER CAPACITY:**

**XXXXX**

**POWER REQUIREMENT:**

**XXXXXXX**



**TRAIN KIDDIE ( RESINA )**

**OBAIKAN TAIF**

**27-04-2019**

**ASSET NO.16350**

**MANUFACTURER:**

**XXXXXX**

**YEAR MANUFACTURED:**

**XXXXXX**

**DIMENSION:**

**XXXXX**

**PASSENGER CAPACITY:**

**XXXXX**

**POWER REQUIREMENT:**

**XXXXXXX**



**MEGA MIX RIDE**  
**SP- DHARAN MALL**  
**21-05-2019**  
**ASSET NO. 31206**

**MANUFACTURER:**

**XXXXXX**

**YEAR MANUFACTURED:**

**XXXXXX**

**DIMENSION:**

**XXXXX**

**PASSENGER CAPACITY:**

**XXXXX**

**POWER REQUIREMENT:**

**XXXXXXX**



**VOLARE**  
**EXHIBITION JEDDHA**  
**31-07-2019**  
**ASSET NO. 34718**

**MANUFACTURER:**

**XXXXXX**

**YEAR MANUFACTURED:**

**XXXXXX**

**DIMENSION:**

**XXXXX**

**PASSENGER CAPACITY:**

**XXXXX**

**POWER REQUIREMENT:**

**XXXXXXX**



**FLAYING WHALE**  
**RIYADH GALLERY**  
**31-10-2019**  
**ASSET NO.**

**MANUFACTURER:**

**XXXXXX**

**YEAR MANUFACTURED:**

**XXXXXX**

**DIMENSION:**

**XXXXX**

**PASSENGER CAPACITY:**

**XXXXX**

**POWER REQUIREMENT:**

**XXXXXXX**



**SALASIL FRUIT SWING  
DAREEN MALL DAMMAM  
07-12-2019  
ASSET NO. 22890**

**MANUFACTURER:**

**XXXXXX**

**YEAR MANUFACTURED:**

**XXXXXX**

**DIMENSION:**

**XXXXX**

**PASSENGER CAPACITY:**

**XXXXX**

**POWER REQUIREMENT:**

**XXXXXXX**



**BIG WHEEL**  
**HAPPY LAND DAMMAM**  
**21-12-2019**  
**ASSET NO. 15911**

**MANUFACTURER:**

**XXXXXX**

**YEAR MANUFACTURED:**

**XXXXXX**

**DIMENSION:**

**XXXXX**

**PASSENGER CAPACITY:**

**XXXXX**

**POWER REQUIREMENT:**

**XXXXXXXX**



**TOP DANCER**  
**HAYAT MALL**  
**26-01-2020**  
**ASSET NO. 13035**

**MANUFACTURER:**

**XXXXXX**

**YEAR MANUFACTURED:**

**XXXXXX**

**DIMENSION:**

**XXXXX**

**PASSENGER CAPACITY:**

**XXXXX**

**POWER REQUIREMENT:**

**XXXXXXX**



**ROLLER COASTER  
BENOON LAND ABHA  
01-08-2020  
ASSET NO. 18843**

**MANUFACTURER:**

**XXXXXX**

**YEAR MANUFACTURED:**

**XXXXXX**

**DIMENSION:**

**XXXXX**

**PASSENGER CAPACITY:**

**XXXXX**

**POWER REQUIREMENT:**

**XXXXXXXX**



**OCTOPUS BIG**  
**BENOON LAND ABHA**  
**06-08-2020**  
**ASSET NO. 28632**

**MANUFACTURER:**

**XXXXXX**

**YEAR MANUFACTURED:**

**XXXXXX**

**DIMENSION:**

**XXXXX**

**PASSENGER CAPACITY:**

**XXXXX**

**POWER REQUIREMENT:**

**XXXXXXX**



**CAROUSEL DOUBLE DECKER**  
**JEDDHA AZIZ MALL**  
**02-11-2020**  
**ASSET NO. 14956**

**MANUFACTURER:**

**XXXXXX**

**YEAR MANUFACTURED:**

**XXXXXX**

**DIMENSION:**

**XXXXX**

**PASSENGER CAPACITY:**

**XXXXX**

**POWER REQUIREMENT:**

**XXXXXXX**



**SAMBA BALLOON  
FUN TOWN TABUK  
02-12-2020  
ASSET NO. 18152**

**MANUFACTURER:**

**XXXXXX**

**YEAR MANUFACTURED:**

**XXXXXX**

**DIMENSION:**

**XXXXX**

**PASSENGER CAPACITY:**

**XXXXX**

**POWER REQUIREMENT:**

**XXXXXXX**



**BOINGER RIDE**  
**JEDDHA AZIZ MALL**  
**20-12-2020**  
**ASSET NO. 18317**

**MANUFACTURER:**

**XXXXXX**

**YEAR MANUFACTURED:**

**XXXXXX**

**DIMENSION:**

**XXXXX**

**PASSENGER CAPACITY:**

**XXXXX**

**POWER REQUIREMENT:**

**XXXXXXXX**



**APOLLO MINI**  
**JEDDHA AZIZ MALL**  
**02-01-2021**  
**ASSET NO. 28561**

**MANUFACTURER:**

**XXXXXX**

**YEAR MANUFACTURED:**

**XXXXXX**

**DIMENSION:**

**XXXXX**

**PASSENGER CAPACITY:**

**XXXXX**

**POWER REQUIREMENT:**

**XXXXXXX**



**MINI TRAIN**  
**SP- DHARAN**  
**27-12-2020**  
**ASSET NO. 12631**

**MANUFACTURER:**

**XXXXXX**

**YEAR MANUFACTURED:**

**XXXXXX**

**DIMENSION:**

**XXXXX**

**PASSENGER CAPACITY:**

**XXXXX**

**POWER REQUIREMENT:**

**XXXXXXXX**



**TRAIN TRACTOR**  
**AZIZ MALL JEDDHA**  
**14-03-2021**  
**ASSET NO. 13027**

**MANUFACTURER:**

**XXXXXX**

**YEAR MANUFACTURED:**

**XXXXXX**

**DIMENSION:**

**XXXXX**

**PASSENGER CAPACITY:**

**XXXXX**

**POWER REQUIREMENT:**

**XXXXXXXX**





# ***MEDIUM BUMPER CAR***

**ASSET #:17080**

**MANUFACTURER: I.E.PARK**

**PASSENGER CAPACITY: 6CAR 12SEAT**

**ELECTRICAL SPECIFICATIONS:**

**3PHASE+N 380V**

**DIMENSIONS : 12MT L x 8MT WIDTH**



# ***JUMP AROUND***

- **ASSET #:** 17077
- **MANUFACTURER:** GULF TECH K.S.A
- **PASSENGER CAPACITY:** 5 CONDOLA/20 SEATS
- **ELECTRICAL SPECIFICATIONS:** 5KW/3PHASE+N 380V
- **DIMENSIONS :** 7.5M(DIA)



# ***MINI ROUTA***

- **ASSET #:** 19492
- **MANUFACTURER:** SBF
- **PASSENGER CAPACITY:** 20
- **ELECTRICAL SPECIFICATIONS:** 5.5KW  
380V 60hz 3P+N
- **DIMENSIONS :** 4MT L /3MT W

اسم اللعبة العجلة الصغيرة ٣

**تعليمات السلامة**

ممنوع استئداء هذه اللعبة على من يعاني من أحد الأمراض التالية  
 أمراض القلب - الصدغ - العوارض - الإغماعان - ارتفاع الضغط - السكر

هذه اللعبة مخصصة للأعمار من ٤ - ٨ سنوات

أول أو غير من قبل اللعبة التي الخروج  
 • تدور القارورة والقدودان أو صفيها عند توقف أو التوقف اللعبة  
 • ممنوع الاستئداء من اللعبة والعباءة والعباءة والعباءة  
 • ممنوع اللعب أو العبث باللعبة أثناء اللعب  
 • ممنوع اللعب أو العبث باللعبة أو أي جزء من اللعبة  
 • ممنوع اللعب أو العبث باللعبة أو أي جزء من اللعبة  
 • ممنوع اللعب أو العبث باللعبة أو أي جزء من اللعبة

عدم العبث باللعبة أثناء اللعب  
 • ممنوع اللعب أو العبث باللعبة أثناء اللعب  
 • ممنوع اللعب أو العبث باللعبة أثناء اللعب  
 • ممنوع اللعب أو العبث باللعبة أثناء اللعب



## ***SUB MARINE***

- **ASSET #:** 13559
- **MANUFACTURER:** GULF TECH K.S.A
- **PASSENGER CAPACITY:** 1CONDOLA
- **12 SEATS**
- **ELECTRICAL SPECIFICATIONS:**
- **3PHASE +N 380V 7KW**
- **DIMENSIONS :** 7MT L X 4 MT WIDTH



## ***MINI TRAIN***

- **ASSET #:** 17082
- **MANUFACTURER:** ITAL RESINA
- **PASSENGER CAPACITY:** 18
- **ELECTRICAL SPECIFICATIONS:**
- **1PHASE 230V 3KW**
- **DIMENSIONS :** 17MT L/7.5MT WIDTH



# ***HAPPY KANGAROO***

- **ASSET #:** 14457
- **MANUFACTURER:** VISA ITALY
- **PASSENGER CAPACITY:** 6
- **ELECTRICAL SPECIFICATIONS:**
- **3PHASE+N 380V/7.5KW**
- **DIMENSIONS :** 14.5 X 7 m



# **SPEEDWAY**

- **ASSET #:** 27432
- **MANUFACTURER:** ANTONIA ZEMPERLA
- **PASSENGER CAPACITY:** 6 CARS / 12 SEATS
- **ELECTRICAL SPECIFICATIONS:** 380/5.5KW
- **DIMENSIONS :** 10.5MT L x 6MT W



RIDE NAME		SPEEDWAY		MADE IN ITALY	
SERIAL n°	391GSP06F14205SA	MONTH/YEAR OF MANUFACTURING	07/2014		
PASSENGER CAPACITY PER VEHICLE	2 passengers (max 1 adults)				
TOTAL PASSENGER CAPACITY	16 passengers (max 8 adults)				
MAX LOADING WEIGHT PER VEHICLE	125 kg	275 lb			
TOTAL LOADING WEIGHT	750 kg		1650 lb		
HEIGHT RESTRICTION	90 cm	36 in	IF NOT ACCOMPANIED		
MAX RIDE SPEED	5 rpm	CLOCKWISE	ANTICLOCKWISE <input checked="" type="checkbox"/>		
MECHANICAL POWER	4 kW <sup>(1)</sup>	380 Volt +/-10%	60 Hz	3 Phases + N	
LIGHT POWER	1.5 kW	12 - 220 Volt +/-10%	/	Phase + N	
FULL-LOAD CURRENT	19 A	SHORT-CIRCUIT INTERRUPTING		8 kA	
MAXIMUM OPERATING WIND	54 km/h		33.6 mph		

## ***MINI SWINGER***

- **ASSET #:** 17085
- **MANUFACTURER:** GULF TECH K.S.A
- **PASSENGER CAPACITY:** 20
- **ELECTRICAL SPECIFICATIONS:**
- 3PHASE+N 380V 5KW
- **DIMENSIONS :** 9MT(DIA)





## ***CAROUSEL***

- **ASSET #:** 17076
- **MANUFACTURER:** VISA
- **PASSENGER CAPACITY:** 12 SEATS
- **ELECTRICAL SPECIFICATIONS:** 3 PHASE+N  
380V /5KW
- **DIMENSIONS :**6 MT (DIA)

# ***MAGIC GALLEON***

- **ASSET #:** 19252
- **MANUFACTURER:** SBF-978.023
- **PASSENGER CAPACITY:**1 GONDOLA / 18 SEAT
- **ELECTRICAL SPECIFICATIONS:**3PHASE+N 380V/12KW
- **DIMENSIONS :** 12.5MT L x 9MT W

RIDE NAME	MAGIC GALLEON		
SERIAL N°	978.023	MONTH/YEAR OF MANUFACTURING NOV. 2005	
PASSENGER CAPACITY PER VEHICLE	18		
TOTAL PASSENGER CAPACITY	18 PEOPLE		
MAX LOADING WEIGHT PER VEHICLE	Kg. 900 or 1350 Kg.		
TOTAL LOADING WEIGHT	Kg. 7.650 or Kg. 8.100		
HEIGHT/AGE RESTRICTION	3 years old	IF NOT ACCOMPANIED	
MAX RIDE SPEED	10 Rpm	CLOCKWISE	X
		ANTICLOCKWISE	X
MECHANICAL POWER	10 Kw		
LIGHT POWER	2 Kw		



## Roller Coaster AH 15135

• **MANUFACTURER:** ITALY - LEISURE AND TRANSPORTATION (L&T)

• **S.N.:** MC22

• **PASSENGER CAPACITY:** 20

• **ELECTRICAL SPECIFICATIONS:** 380V

• **DIMENSIONS:** 33.2 MT \* 17.9 MT

• **MANUFACTURING YEAR:**



**Mexicana**

**AH 15133**

- 
- **MANUFACTURER:** EMILINA LUNA PARK
  - **S.N.:** FI 31504SA
  - **PASSENGER CAPACITY:** 18
  - **ELECTRICAL SPECIFICATIONS:** 39 KW
  - **DIMENSIONS:** 11Ø
  - **MANUFACTURING YEAR:** 2004



**Mini Avio**

**AH 12522**

---

- **MANUFACTURER:** VISA
- **S.N.:**
- **PASSENGER CAPACITY:** 20
- **ELECTRICAL SPECIFICATIONS:**
- **DIMENSIONS:** 8M
- **MANUFACTURING YEAR:**



## Mini Train

AH 15277

- 
- **MANUFACTURER:** SBF VISA
  - **S.N.:** S.291.11.04.01
  - **PASSENGER CAPACITY:** 16
  - **ELECTRICAL SPECIFICATIONS:** 220V
  - **DIMENSIONS:** 16.5M x 7.5M
  - **MANUFACTURING YEAR:** 2011



## *Fruity Swing*

**AH 2890**

- 
- **MANUFACTURER:** GUANG DONG CMIC IMPORT & EXPORT CO. LTD. - CHINA
  - **S.N.:**
  - **PASSENGER CAPACITY:** 16
  - **ELECTRICAL SPECIFICATIONS:** 3.7kw
  - **DIMENSIONS:** 11.6 Ø x H 4.8m
  - **MANUFACTURING YEAR:**



## **Geostrina Cup**

**AH 15916**

- 
- **MANUFACTURER:** SBF
  - **S.N.:**
  - **PASSENGER CAPACITY:** 20
  - **ELECTRICAL SPECIFICATIONS:** 2KW
  - **DIMENSIONS:** 5.8MØ
  - **MANUFACTURING YEAR:** 2014



*pops up*

**AH 15131**

- 
- **MANUFACTURER:** SBF ITALY
  - **S.N.:**
  - **PASSENGER CAPACITY:** 20
  - **ELECTRICAL SPECIFICATIONS:** 3PH , 380V
  - **DIMENSIONS:** 9 MTR
  - **MANUFACTURING YEAR:**



## *Mid Scooter*

**AH 15127**

- 
- **MANUFACTURER:** C&S ITALY
  - **S.N.:**
  - **PASSENGER CAPACITY:** 16
  - ELECTRICAL SPECIFICATIONS:**
  - **DIMENSIONS:** 7.5M x 13M
  - MANUFACTURING YEAR:**



## *Crazy Surf*

**AH 22869**

- **MANUFACTURER:** Zamperla
- **S.N.:** 860GCB12F12181SA
- **PASSENGER CAPACITY:** 12
- **ELECTRICAL SPECIFICATIONS:** 26KW
- **DIMENSIONS:** 7M x 11M
- **MANUFACTURING YEAR:** 2012



## 7D Cinema

- MANUFACTURER:
- S.N.:
- PASSENGER CAPACITY:
- ELECTRICAL SPECIFICATIONS:
- DIMENSIONS:
- MANUFACTURING YEAR:



## *Soft Play*

**AH-27794**

- 
- **MANUFACTURER:**
  - **S.N.:**
  - **PASSENGER CAPACITY:**
  - **ELECTRICAL SPECIFICATIONS:**
  - **DIMENSIONS:**
  - **MANUFACTURING YEAR:**

